

Look at the chart and say the COLOUR not the word

YELLOW **BLUE** **ORANGE**

BLACK **RED** **GREEN**

PURPLE **YELLOW** **RED**

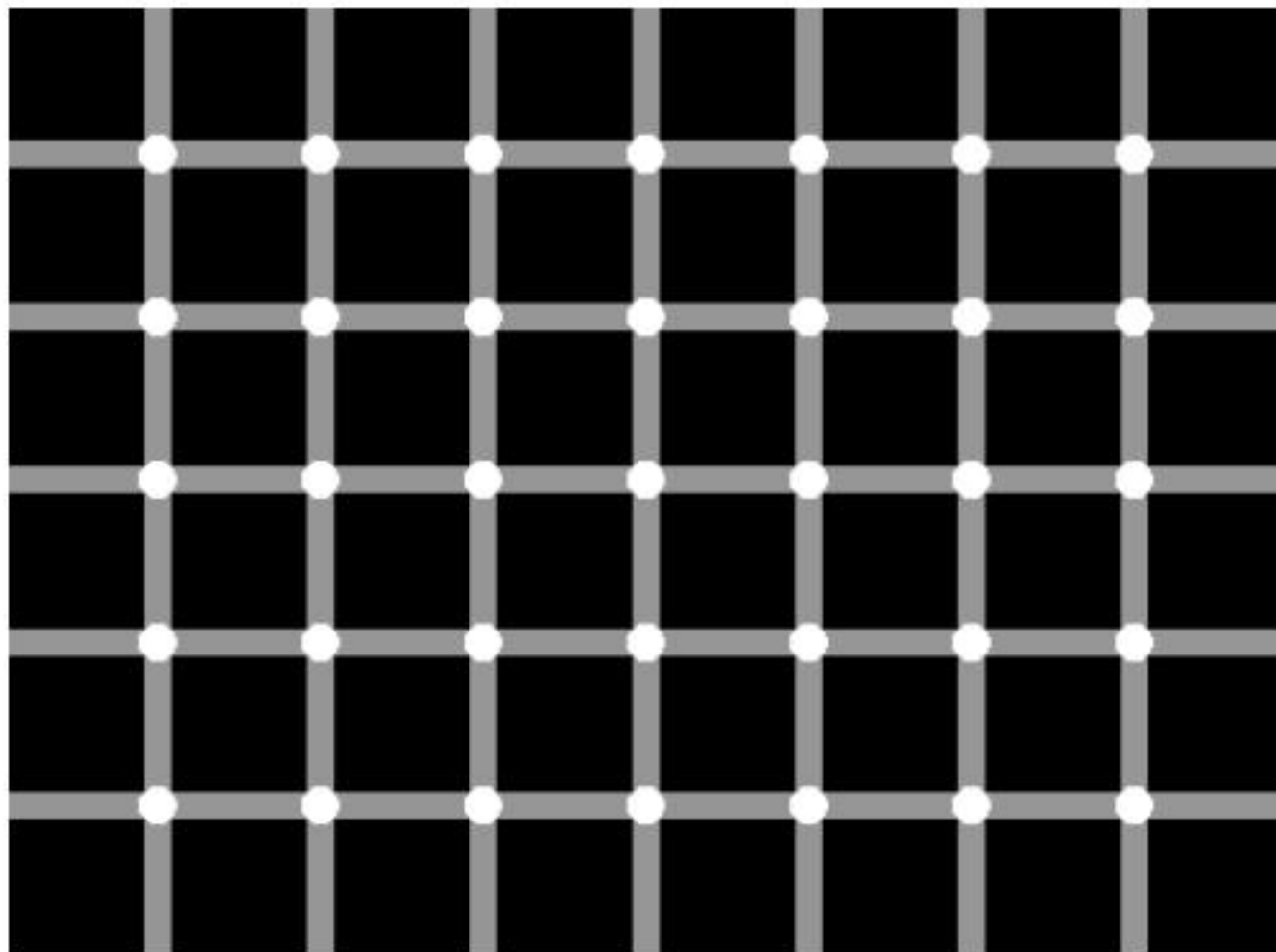
ORANGE **GREEN** **BLACK**

BLUE **RED** **PURPLE**

GREEN **BLUE** **ORANGE**

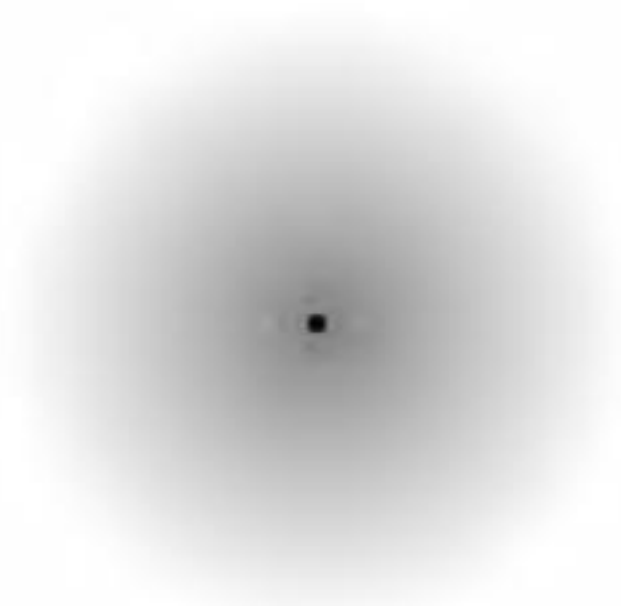
Left – Right Conflict

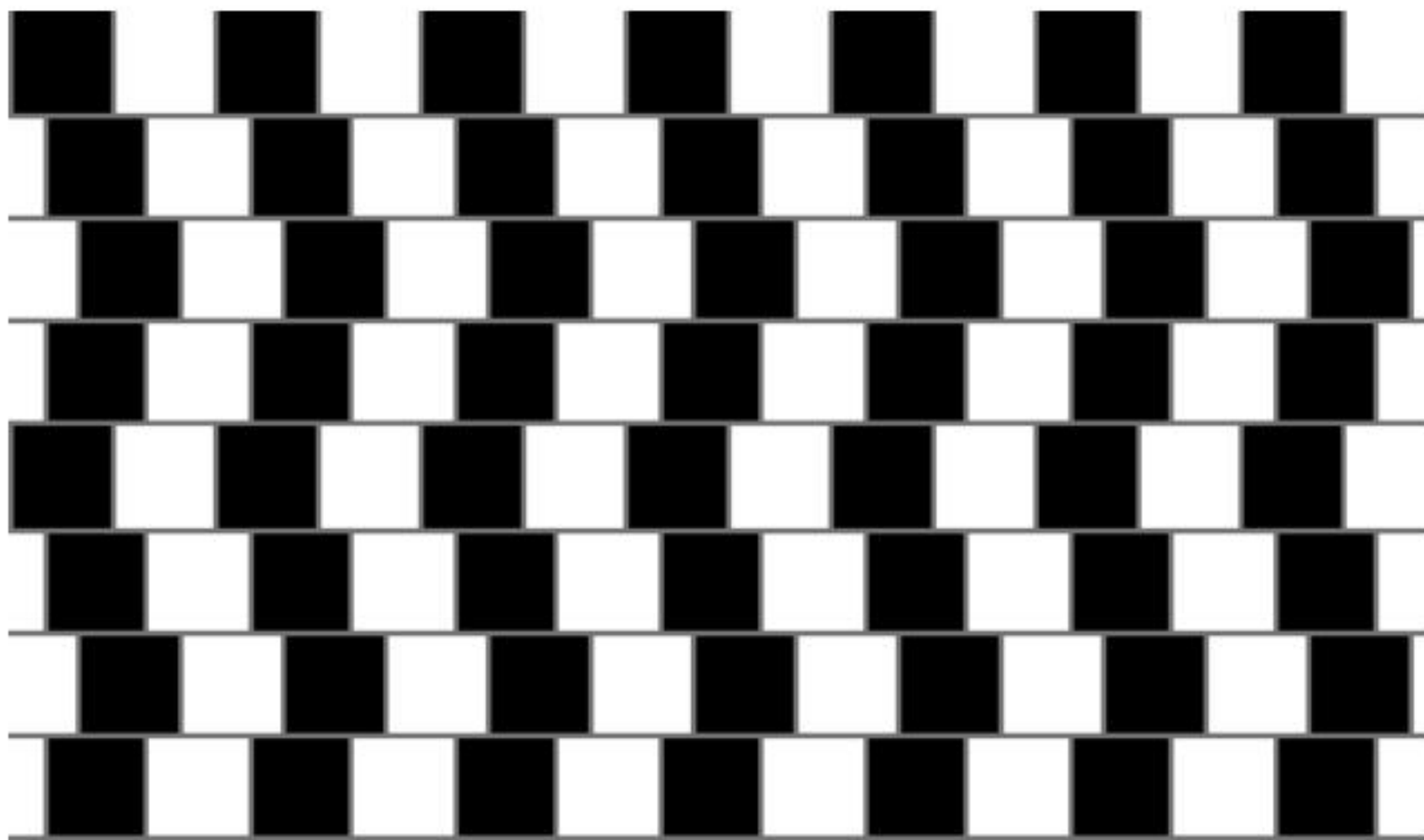
Your right brain tries to say the colour but your left brain insists on reading the word.



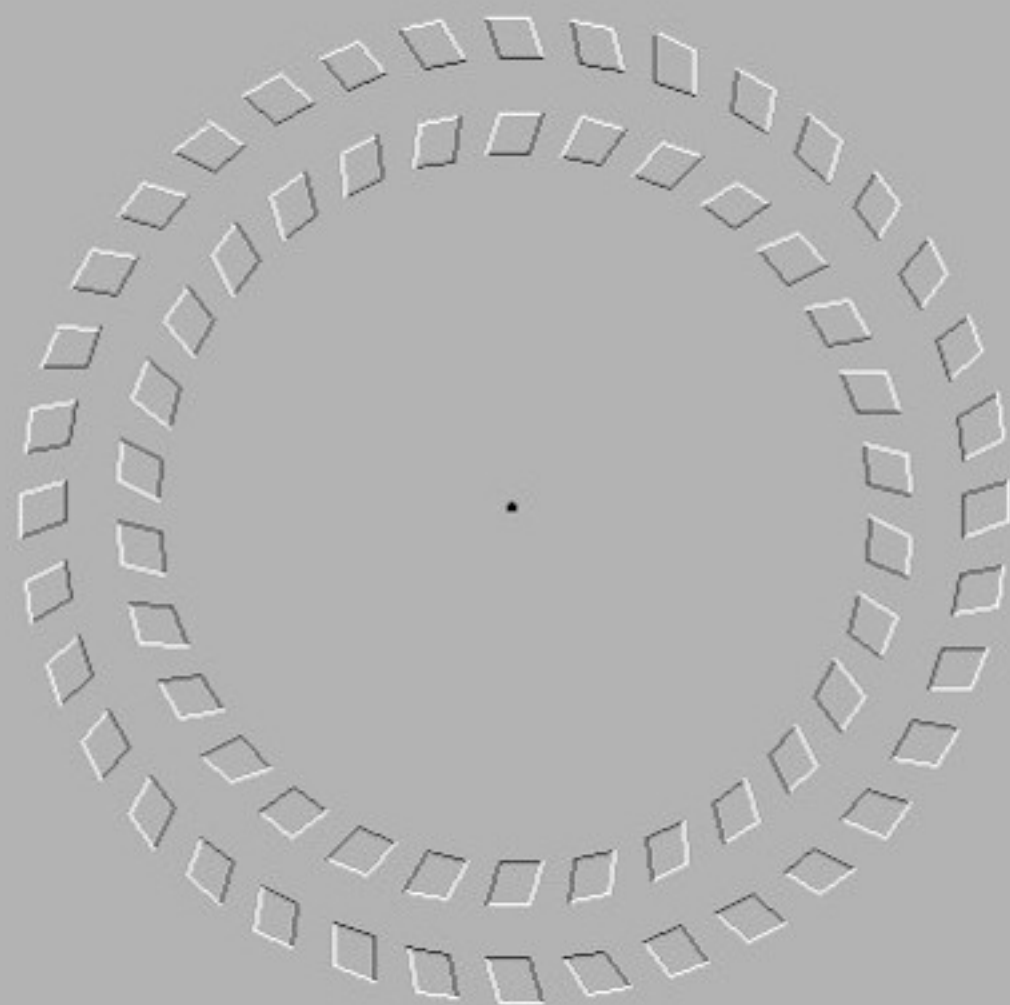
Count the black dots! :o)

Keep staring at the black dot. After a while the gray haze around it will appear to shrink.





Are the horizontal lines parallel or do they slope?



FOCUS ON THE DOT IN THE CENTRE AND MOVE YOU HEAD BACKWARDS AND FORWARDS.
WEIRD HEY...